

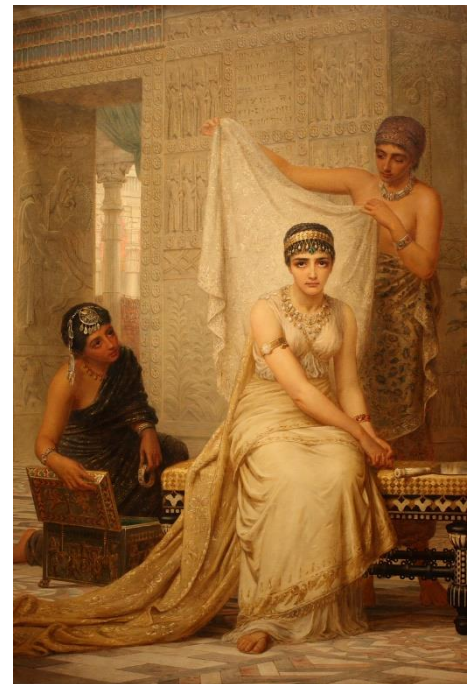


Esther's Great Dilemma

When Esther first became queen she did not reveal to King Ahasuerus that she was a Jew. When Mordechai heard of Haman's plans to destroy the Jews in Shushan, he charged Esther to go before the king and plead for the safety of her people.

Esther weighed her choices:

- IF she kept her secret and stayed silent, she would probably live, but Haman might succeed.
- IF she went to speak to the king uninvited, she might be killed even before having a chance to speak or she might have an opportunity to plead her case.
- IF she told the king of the plot and that she too was a Jew, she might save everyone or she might perish.



Painting by [en:Edwin Long](https://commons.wikimedia.org/wiki/File:Edwin_Long_-_Queen_Esther.jpg), 1878.
[commons.wikimedia.org](https://commons.wikimedia.org/wiki/File:Edwin_Long_-_Queen_Esther.jpg)

You know which decision she made!
Turn this page over to share your Great Dilemma.



What Was Your Great Dilemma?

Choose one prompt and share your story...

- A) Write about a time where you defended a friend or classmate, knowing that you might lose friends over it.
- B) Describe the last time you had to summon courage to do the right thing. What was the situation? What did you do? How did you feel afterwards?

In the box below, write the one word that best describes what it took for you to overcome the situation. Examples might be: courage, integrity, strength...

--

©2016 JTeach.org

Board of Jewish Education of Metropolitan Chicago's Online Resource Center

Author: Linda Sonin